

# SETUP GUIDE



misting equipment





# HIGH PRESSURE PROFESSIONAL MISTING SYSTEMS

SETUP GUIDE



Hydraulic Hose



Male Connector  
(From Hydraulic Hose  
To The System's Main Pipeline)



Stainless Steel Tube For  
Main Pipeline



10 mm Channel Pipe



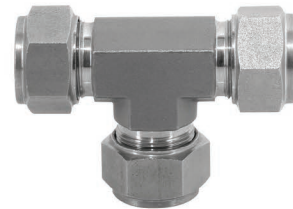
Tee Threaded Adapter  
(Connector)



Cross Threaded  
Connector



Straight Union  
Connector



Tee



180 Degrees Nozzle Carrier  
With Cap



180 Degrees Nozzle  
Carrier



Cap



Nozzle



3 Mm Steel Rope



Grippler



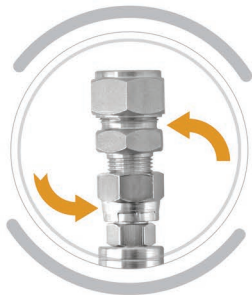
Hanger Wire For  
10 mm Tube



Hanger Wire For  
Nozzle Carrier

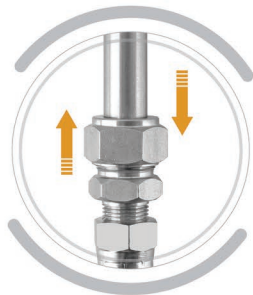


2



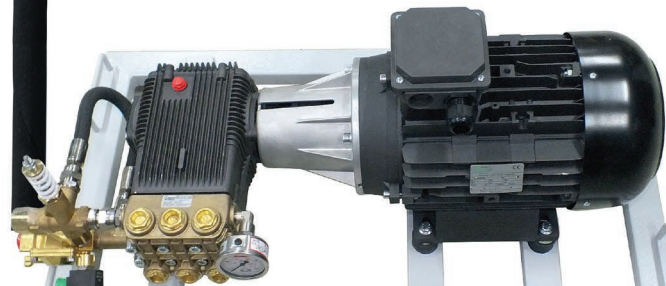
Attach Male Connection To Hydraulic Pipe

3



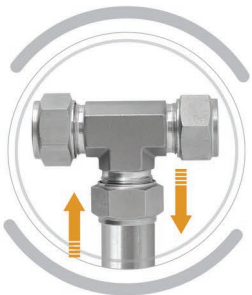
Attach Stainless Steel Tube For Main Pipeline To Male Connection

1



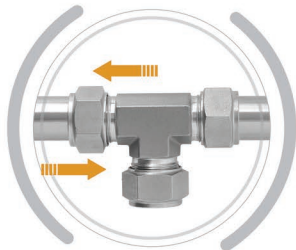
Connect Hydraulic Hose To Pump Station

4



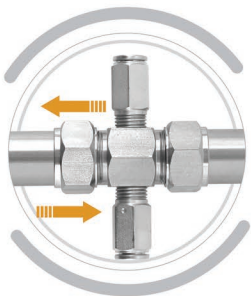
Attach Tee Connector To Stainless Mainline Pipe

5



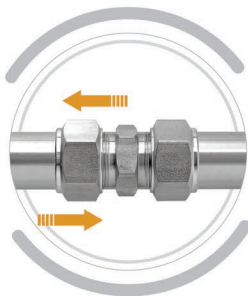
Attach Stainless Mainline Pipe To Tee Connector And Repeat Tee Adapter Along Line

6



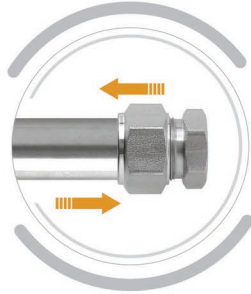
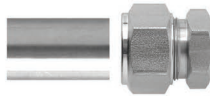
Attach Cross Connector To Stainless Mainline Pipe

7



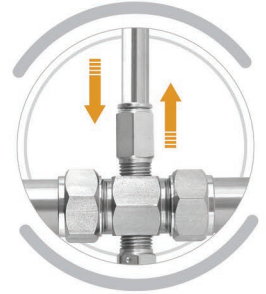
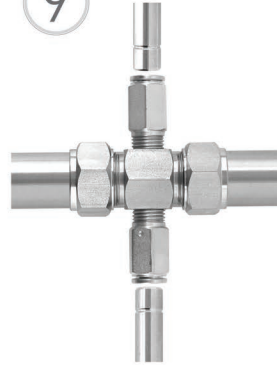
Add Compression Fittings To Splice Together Stainless Mainline Pipe

8



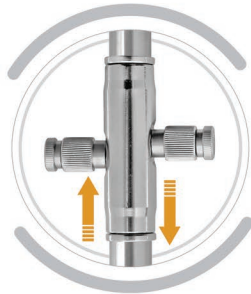
Terminate Stainless Mainline Tube With Cap

9



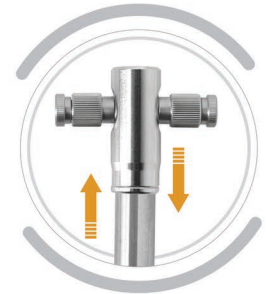
Attach 10 Mm Channel Pipe To Cross Threaded Connector

10

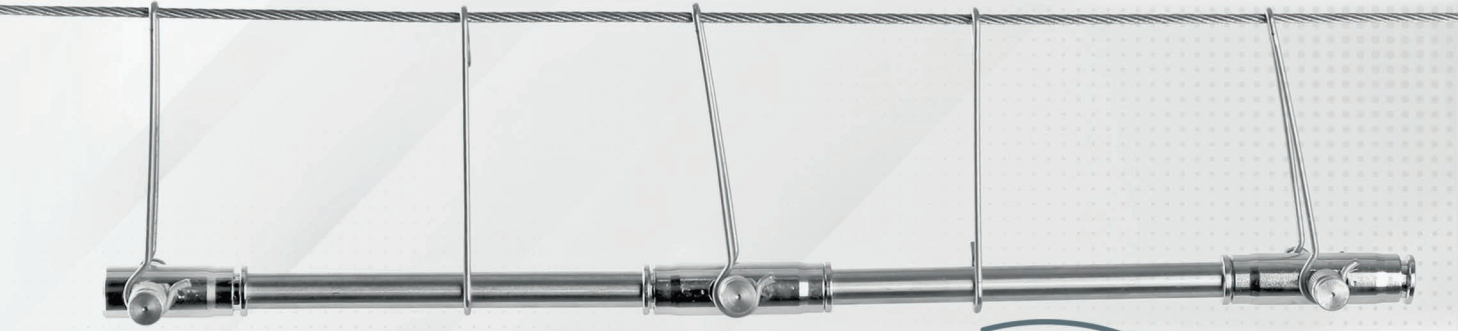
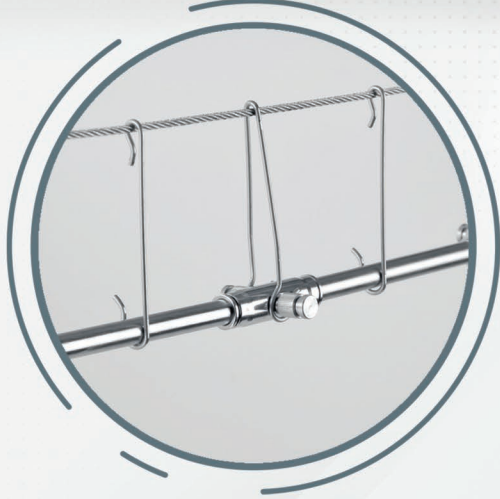


Attach 180 Degrees Nozzle Carrier To 10 mm Channel Pipe

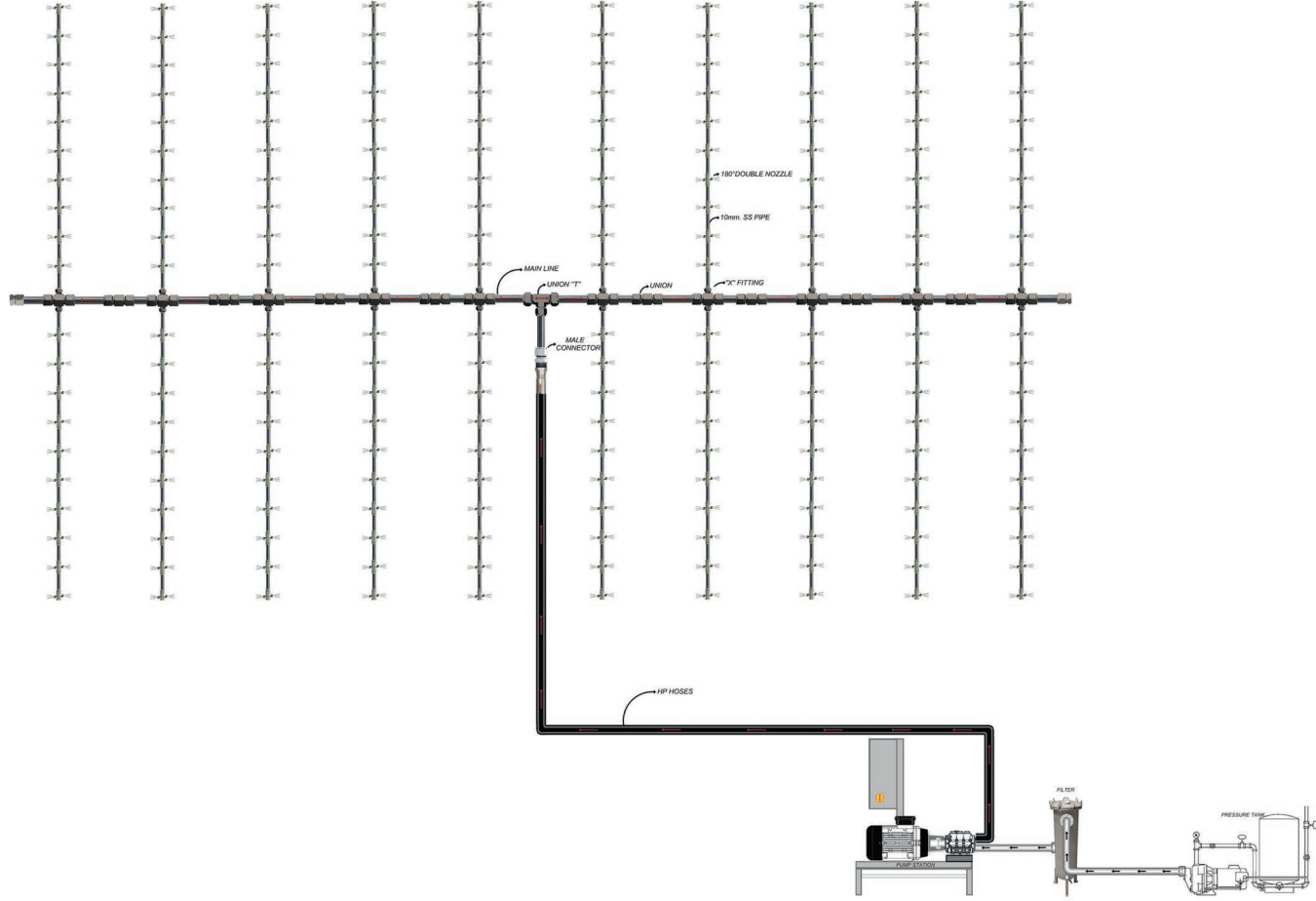
11

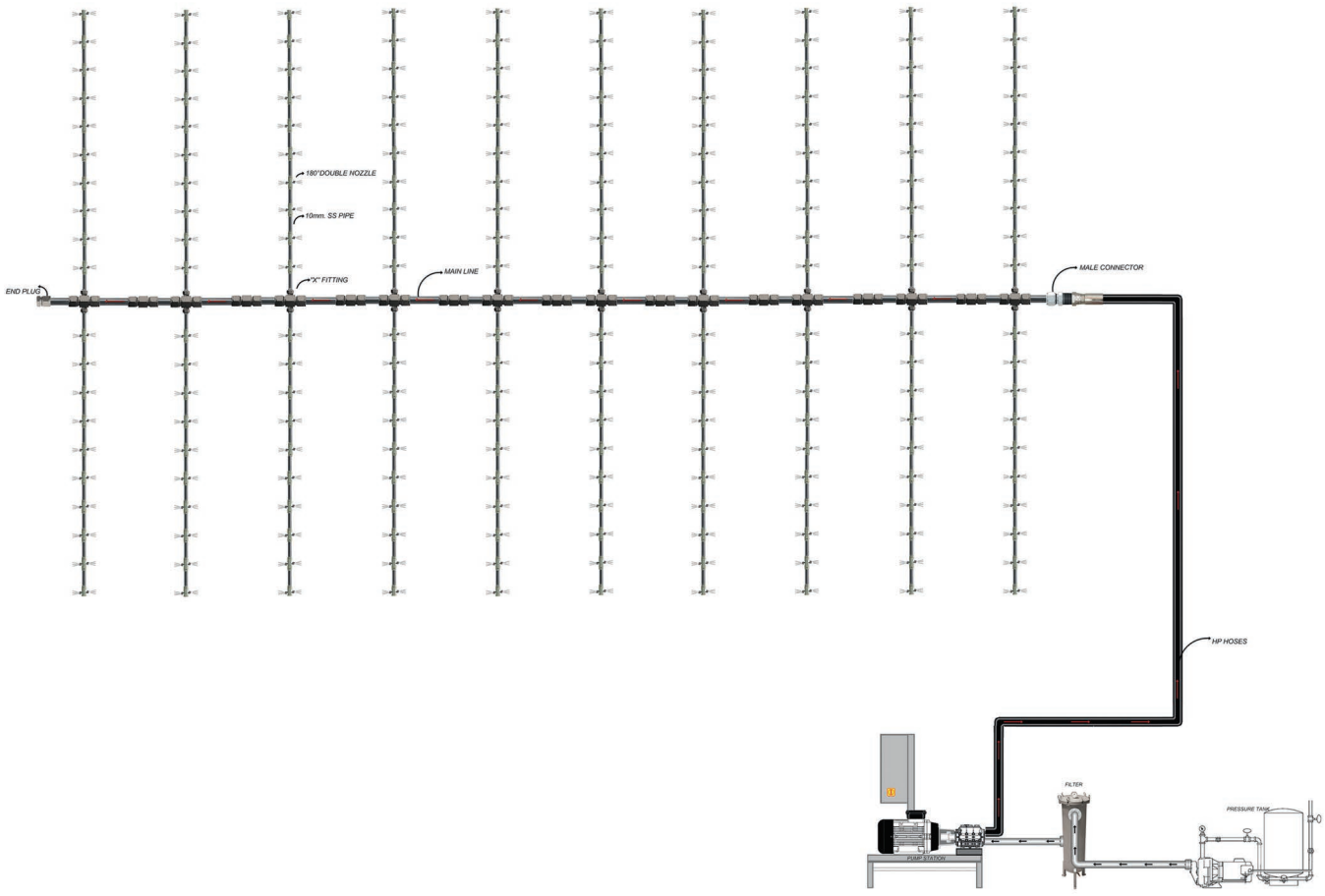


Terminate The Line By Nozzle Carrier With Cap

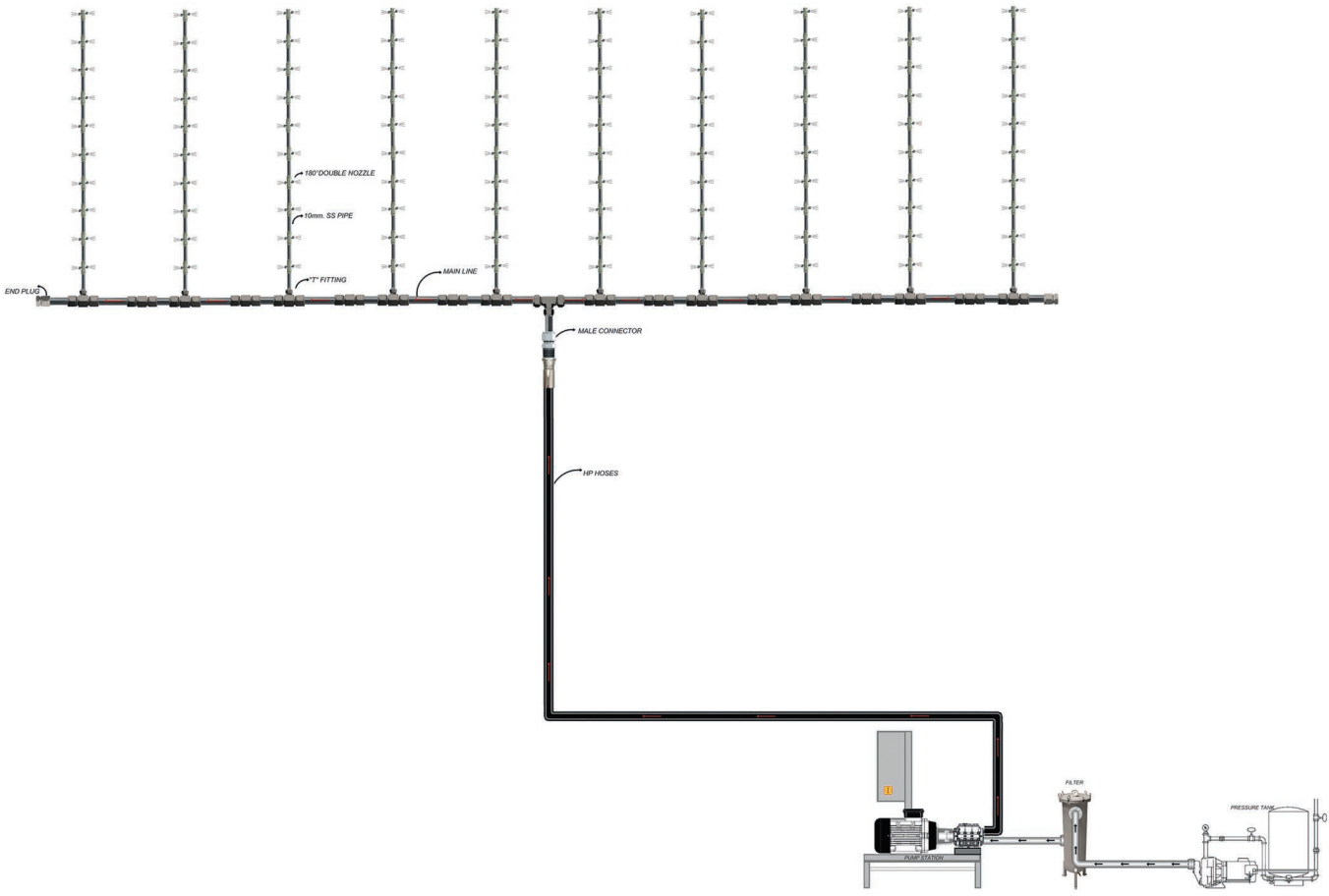
















[www.normist-tr.com](http://www.normist-tr.com)

